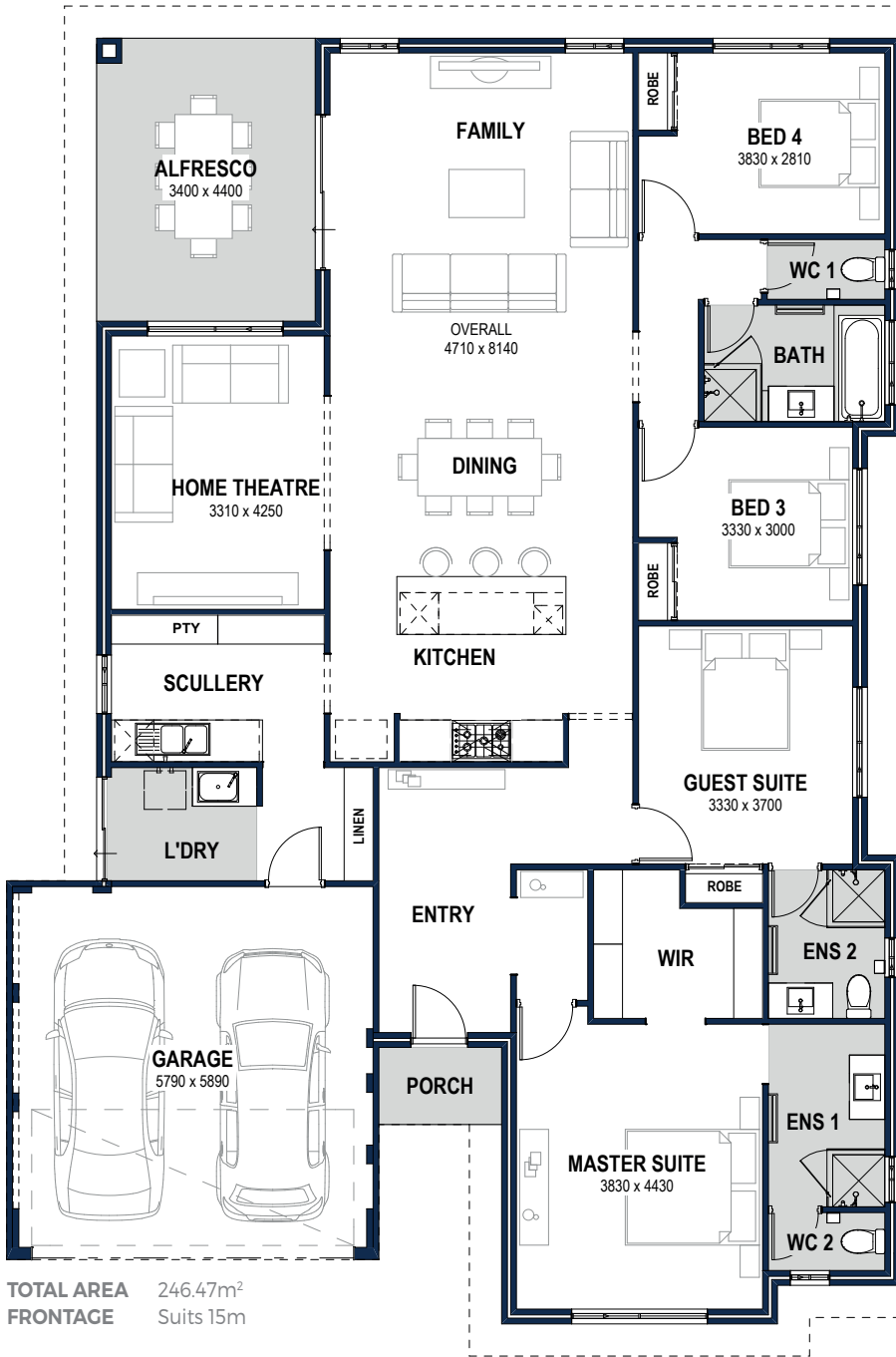


THE YALLINGUP



The Yallingup presents a meticulously planned four-bedroom, three-bathroom residence, showcasing thoughtful design elements and a seamless flow throughout the home. From the moment you step through the welcoming entryway, you are greeted by a sense of elegance and sophistication that sets the tone for the entire property. The architectural layout of the home is carefully crafted to optimise both functionality and aesthetic appeal, creating a harmonious living environment for residents and guests alike.

At the heart of the home, the living area to the rear exudes a sense of warmth and comfort, offering a versatile space for relaxation and entertainment. With an emphasis on open-concept living, the living area seamlessly transitions into the dining and kitchen spaces, creating a cohesive and inviting atmosphere for gatherings and everyday living. The design of the living area prioritises natural light and connectivity to the outdoor spaces, allowing for a seamless indoor-outdoor lifestyle that enhances the overall living experience.



Progress Watcher™



Exclusive Interior Design Service



25 Year Structural Guarantee



More information on the website



9263 4450 | endeavourhomes.com.au

Images for illustration purposes only

ENDEAVOUR HOMES
Builders of Quality