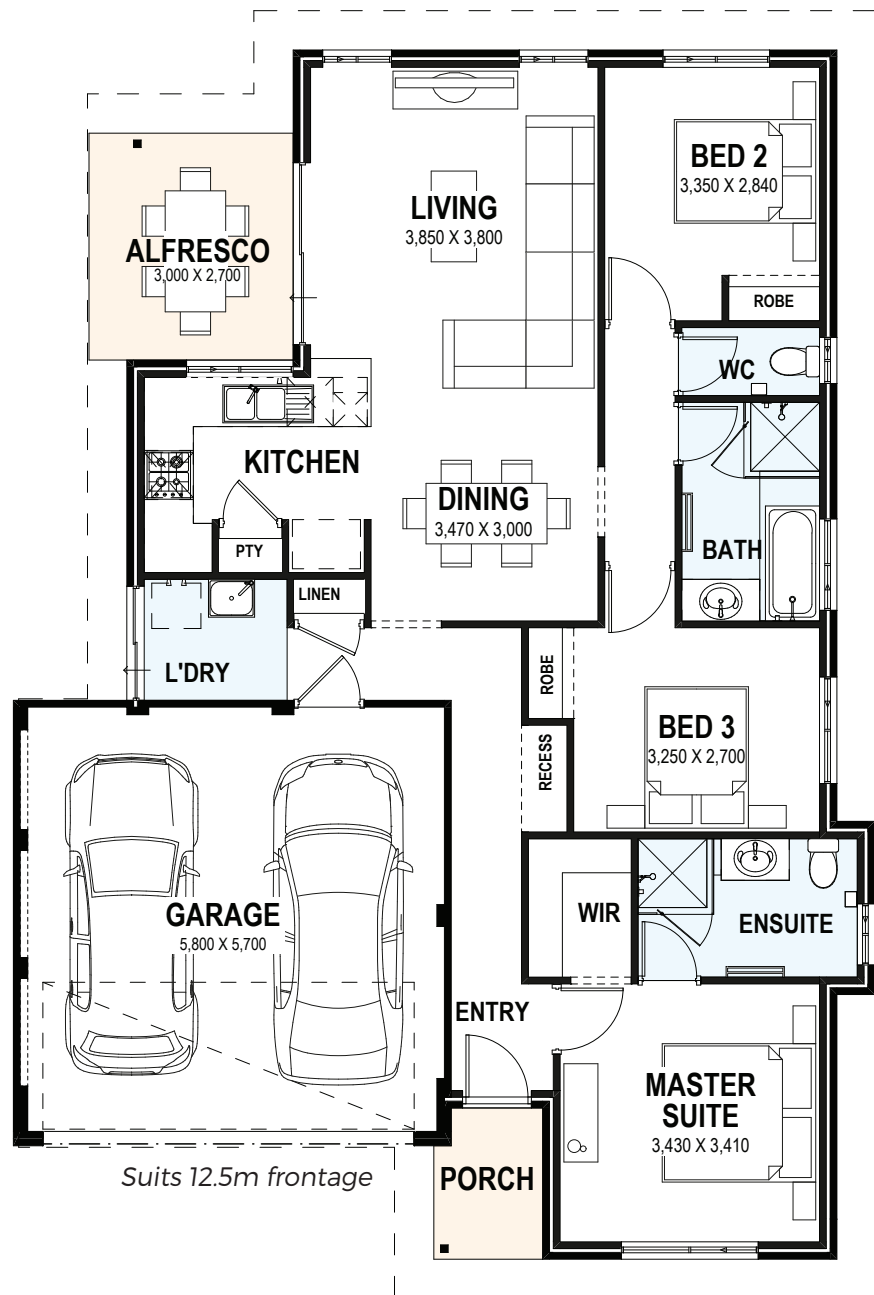


## 3 Bed | 2 Bath | Alfresco | 2 Car Garage

**WHY CHOOSE THE SOLUTION MKII SERIES?**

The Solution MKII Series is constructed to meet rigorous standards, guaranteeing that all supplementary options integrate smoothly without sacrificing quality. It offers a cost-effective entry point, allowing you to select from various features and incorporate the additional elements that are most important to you while staying within your budget.