

## 3 Bedroom | 2 Bathroom | Living/Dining

**WHY CHOOSE THE SOLUTION MKII SERIES?**

The Solution MKII Series is constructed to meet rigorous standards, guaranteeing that all supplementary options integrate smoothly without sacrificing quality. It offers a cost-effective entry point, allowing you to select from various features and incorporate the additional elements that are most important to you while staying within your budget.



Progress Watcher™



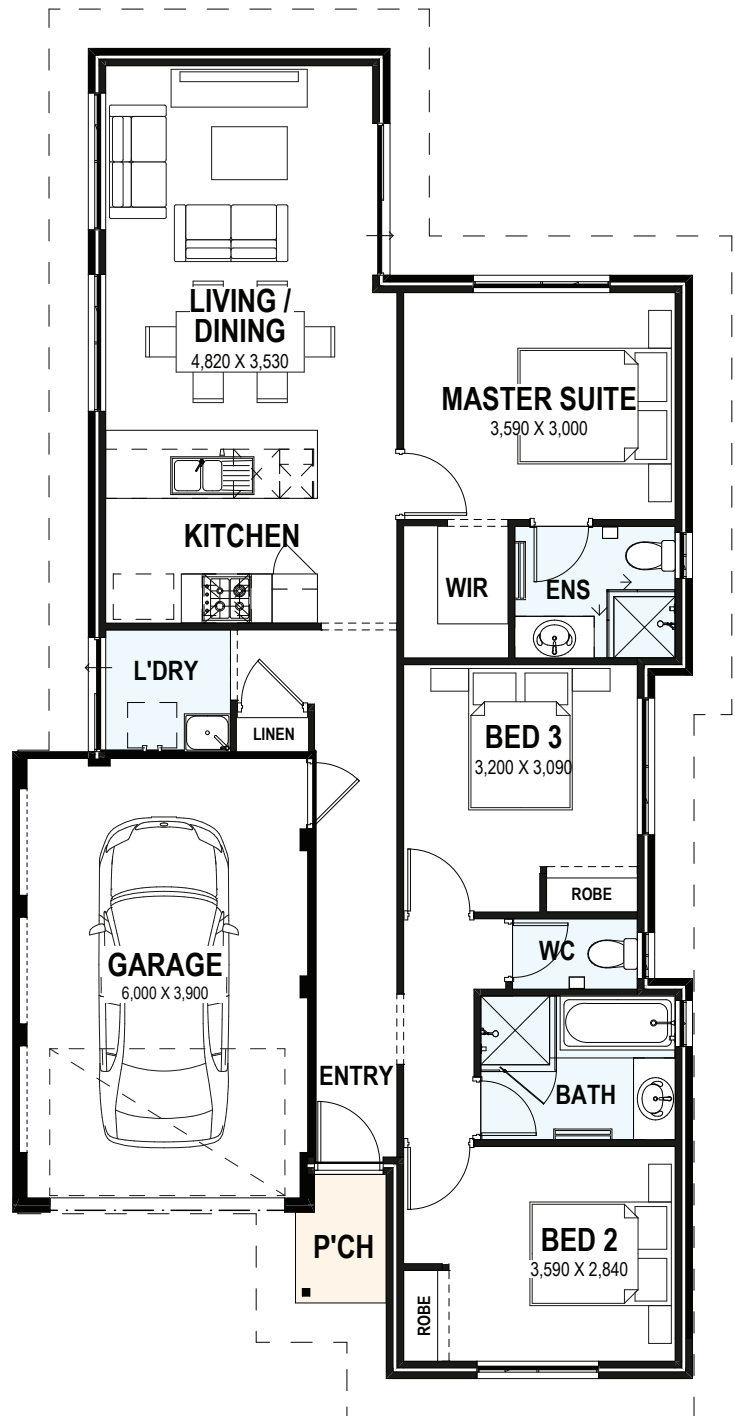
25 Year Structural Guarantee



Exclusive Interior Design Service



More information on the website



Suits 10m frontage