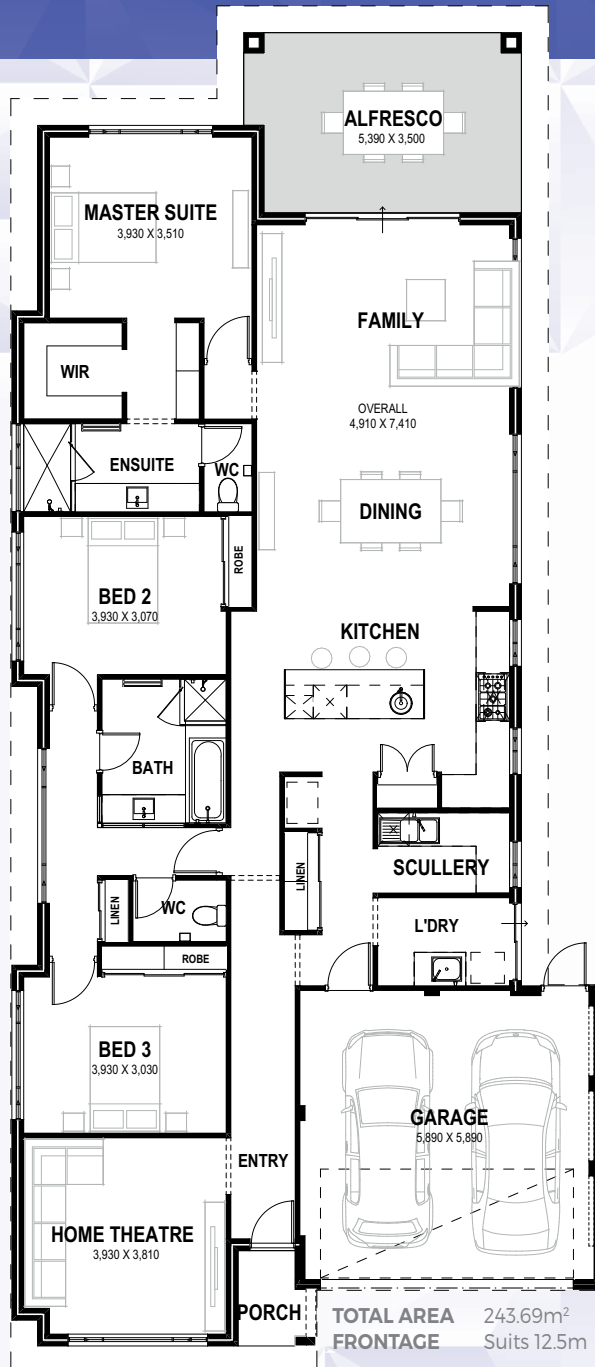


SANTANA

3 2 2 | 12.5

SAPPHIRE
SERIES

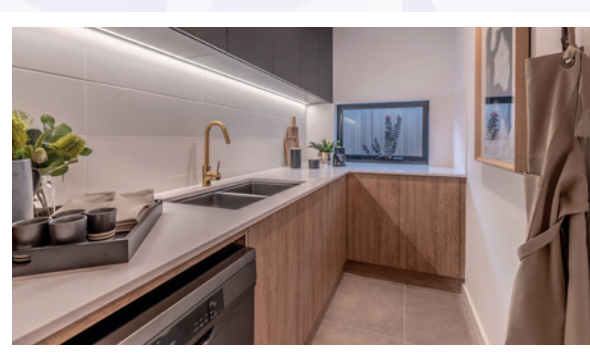
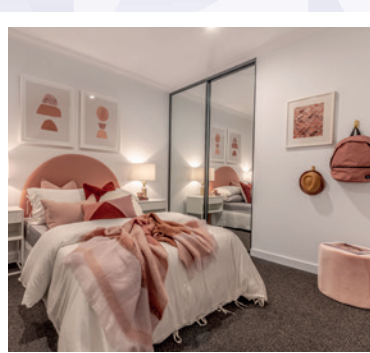


Contemporary living at its finest, the Santana is a well thought out stylish home with three bedrooms, two bathrooms and a theatre room.

Designed to maximise functionality the central open plan kitchen and scullery seamlessly integrates with the dining and family area as well as the rest of the home.

INCLUSIONS

- ◆ Ducted reverse cycle air conditioning
- ◆ 30c high ceilings to the home including alfresco
- ◆ Internal brick wall with drywall lining system
- ◆ Silestone benchtops to kitchen, ensuite and bathroom
- ◆ 900mm kitchen appliances
- ◆ Under bench microwave recess including pot drawer
- ◆ Semi framed shower doors and screens
- ◆ Unframed mirrors with domed facings above vanities
- ◆ Inset trough to laundry
- ◆ 26L instantaneous hot water system
- ◆ 4 point NBN pack and 10 LED downlights



9263 4450 | endeavourhomes.com.au

Images for illustration purposes only

ENDEAVOUR
HOMES