

THE SANTANA



*Signature*  
SERIES

# THE SANTANA

**Contemporary Luxe living at its finest, the Santana is a well thought out stylish home with three bedrooms, two bathrooms and a theatre room.**

Designed to maximise functionality the central open plan kitchen and scullery seamlessly integrates with the dining and family area as well as the rest of the home.

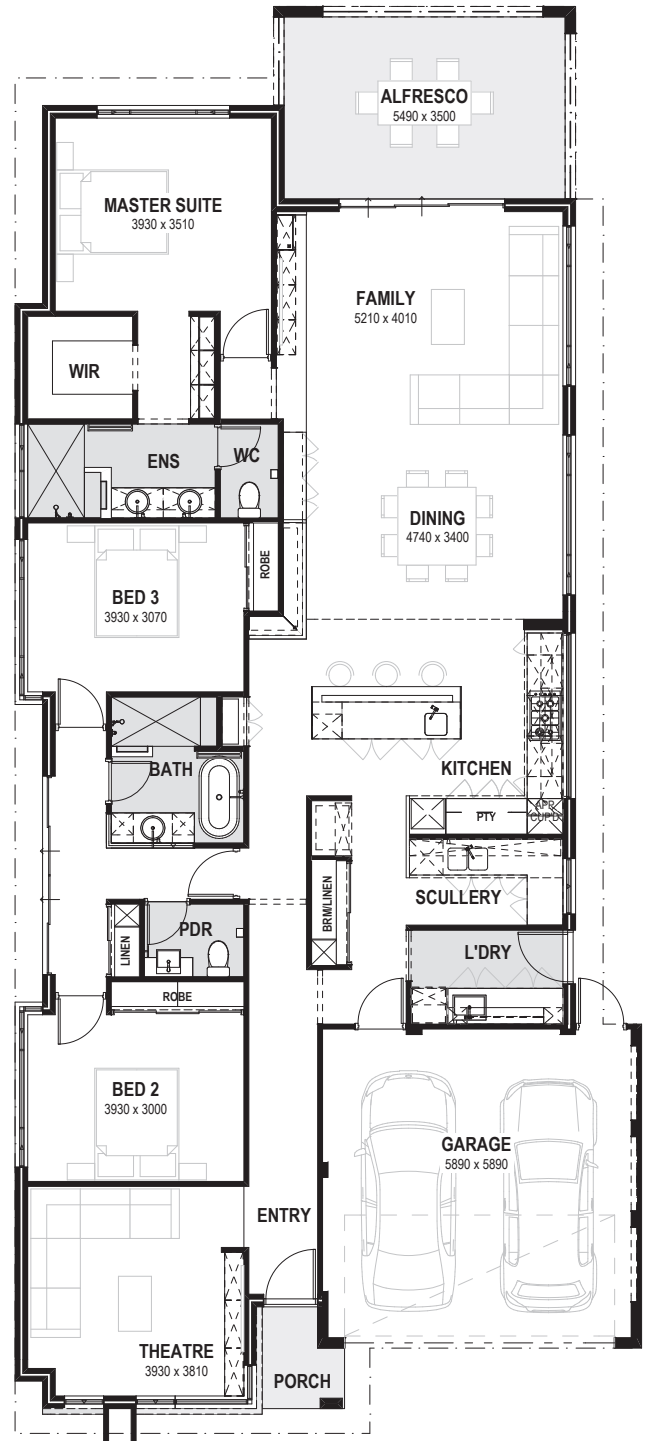
The home showcases a range of alluring materials from Accoya Cladding on the front elevation to the sleek black laminate and timber interior, complimented by elegant brushed gold fittings and a feature stone fireplace.

We are sure this home will tick all the boxes but why not see for yourself.



## Why choose Endeavour Homes?

The answer is simple. Endeavour Homes represents excellent quality at the right price. We have the vision and flair to design dwellings for today's lifestyle. Our goal is to provide display homes that feature differing design aspects and benefits. This enables you to select certain features and incorporate them into your new home and really make it "your home". All display homes are designed to meet the demand of today's lifestyle and as such, we commission different designers to achieve a fresh, innovative balance between style and affordability. We are very proud of our display home range and hope you enjoy the homes as much as we do.



TOTAL AREA 249.33m<sup>2</sup>  
 LIVING AREA 194.31m<sup>2</sup>  
 Suits 12.5m frontage

*Note: All measurements are approximate*



#### **Progress Watcher™**

Follow the progress of your new home from contract signing to finish – from the comfort of your own computer!



#### **Exclusive Interior Design Service**

We've partnered with an interior designer to assist you with colour and tile selections for your new home and turn your dream home decor into a reality.



#### **25 Year Structural Guarantee**

We build quality homes to the highest standards – and provide you with a 25 year structural warranty to ensure your peace of mind.



#### **More information available on the website**

Head to [endeavourhomes.com.au](http://endeavourhomes.com.au) to request a copy of the specification and more information relating to this home design.

**9263 4450 | [endeavourhomes.com.au/homedesigns](http://endeavourhomes.com.au/homedesigns)**

*Endeavour Constructions Pty Ltd*

**ENDEAVOUR**  
HOMES