

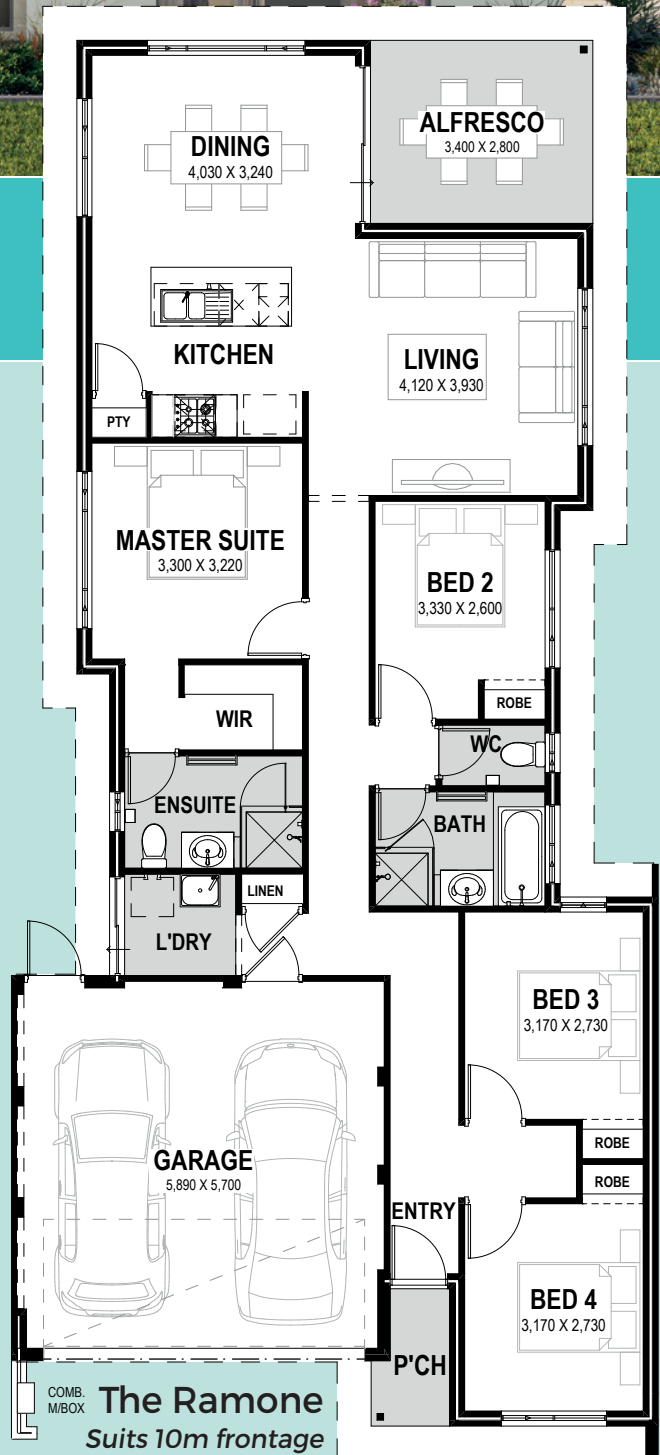


**SITE WORKS  
INCLUDED  
IN THE PRICE**

*\*Picture for illustrative purposes only*

## FOUNDATION SERIES HOMES INCLUDE:

- ✓ **Site Works\*** Includes Soakwells and Crossover
- ✓ **Painting Including Internal Walls**
- ✓ **Ducted Reverse Cycle Air Conditioning**
- ✓ **Large Format Tiles to Living Areas**
- ✓ **Carpets with Underlay to all Bedrooms**
- ✓ **Window Treatments**
- ✓ **20mm Benchtops to the Kitchen** (100% Silica Free)



**The Ramone**  
Suits 10m frontage

*\*Conditions apply*