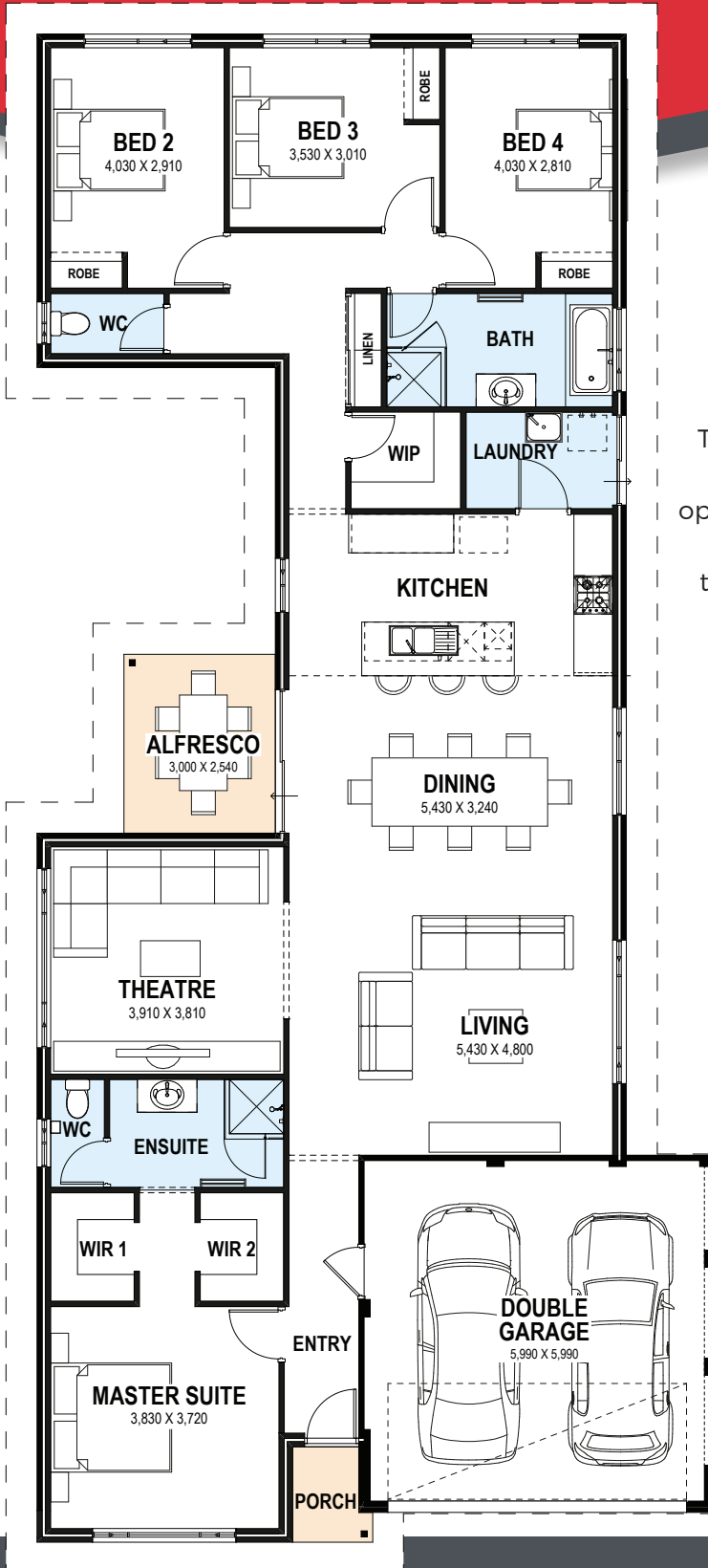


# SOLUTION SERIES

## The Manson

4 Bed | 2 Bath | Theatre Room | 2 Car Garage



Suits 12.5m frontage

### WHY CHOOSE THE SOLUTION SERIES?

The Solution Series is constructed to meet rigorous standards, guaranteeing that all supplementary options integrate smoothly without sacrificing quality. It offers a cost-effective entry point, allowing you to select from various features and incorporate the additional elements that are most important to you while staying within your budget.



Progress Watcher™



25 Year Structural Guarantee



Exclusive Interior Design Service



More information on the website

**(08) 9263 4450**  
endeavourhomes.com.au

**ENDEAVOUR**   
HOMES  
Builders of Quality