

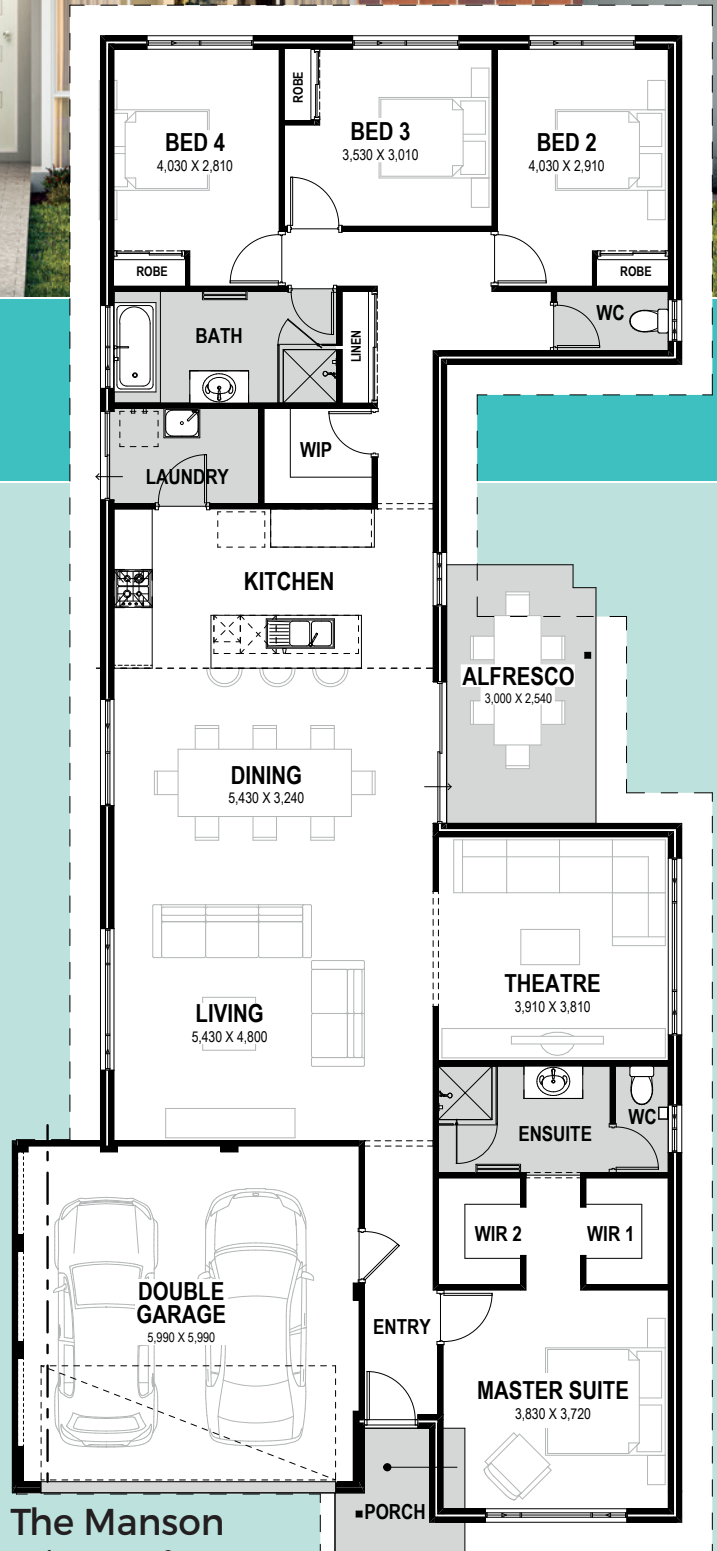


**SITE WORKS  
INCLUDED  
IN THE PRICE**

*\*Picture for illustrative purposes only*

## FOUNDATION SERIES HOMES INCLUDE:

- ✓ Site Works\* Includes Soakwells and Crossover
- ✓ Painting Including Internal Walls
- ✓ Ducted Reverse Cycle Air Conditioning
- ✓ Large Format Tiles to Living Areas
- ✓ Carpets with Underlay to all Bedrooms
- ✓ Window Treatments
- ✓ 20mm Stone Benchtops to the Kitchen



**The Manson**  
Suits 12.5m frontage

*\*Conditions apply*