

THE WESTWOOD



Signature
SERIES

ENDEAVOUR 
HOMES
Builders of Quality

THE WESTWOOD | 58 Vincent Road Sinagra

This Contemporary inspired 'Westwood' display home reflects the current trends and innovations of the present time featuring clean lines, open spaces, and a minimalist aesthetic.

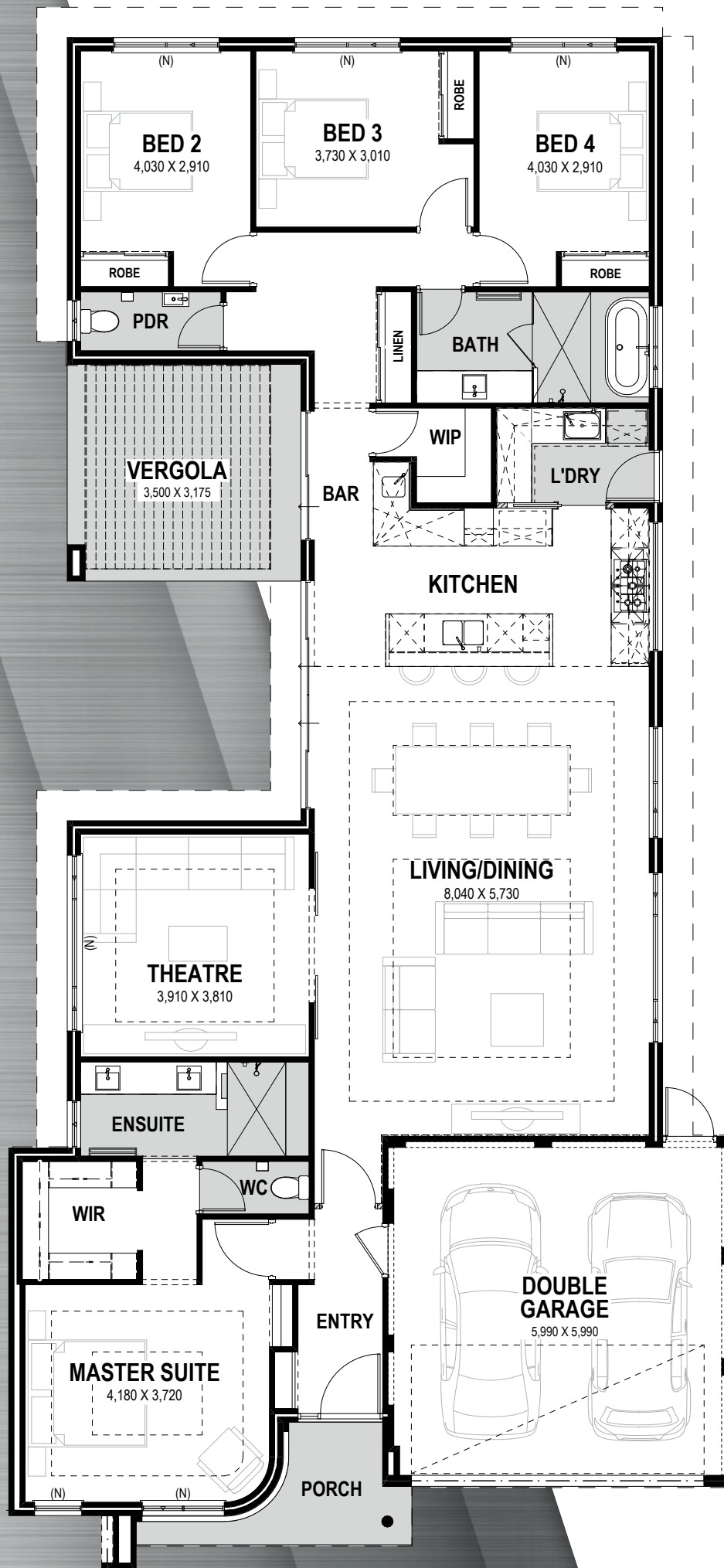
The interior design prioritises simplicity, with a very neutral yet moody monochromatic colour palette and a focus on functionality and comfort.

Featuring sleek kitchen cabinets, minimalist furniture, and statement LED lighting fixtures that add a touch of sophistication and ambience to the Living and Kitchen.

Every detail, from the furnishings to the decor, adheres to a single colour scheme, varying shades of grey, white, or black.

This consistency fosters a sense of cohesion and elegance throughout the space.





TOTAL AREA
253.22m²
LIVING AREA
199.58m²
Suits 12.5m frontage

Note:
All measurements
are approximate



Progress Watcher™

Follow the progress of your new home from contract signing to finish – from the comfort of your own computer!



Exclusive Interior Design Service

We've partnered with an interior designer to assist you with colour and tile selections for your new home and turn your dream home decor into a reality.



25 Year Structural Guarantee

We build quality homes to the highest standards – and provide you with a 25 year structural warranty to ensure your peace of mind.



More information available on the website

Head to endeavourhomes.com.au to request a copy of the specification and more information relating to this home design.

9263 4450 | endeavourhomes.com.au/display-homes

Endeavour Constructions Pty Ltd

ENDEAVOUR 
HOMES
Builders of Quality