

THE CASA DEL SOL



Signature
SERIES

ENDEAVOUR 
HOMES
Builders of Quality

THE CASA DEL SOL | 12 Opulence Street Treeby

This Mediterranean inspired 'Casa del Sol' display home blends elements from Spanish and Mediterranean architecture to create a warm and inviting atmosphere reminiscent of the sunny regions around the Mediterranean Sea.

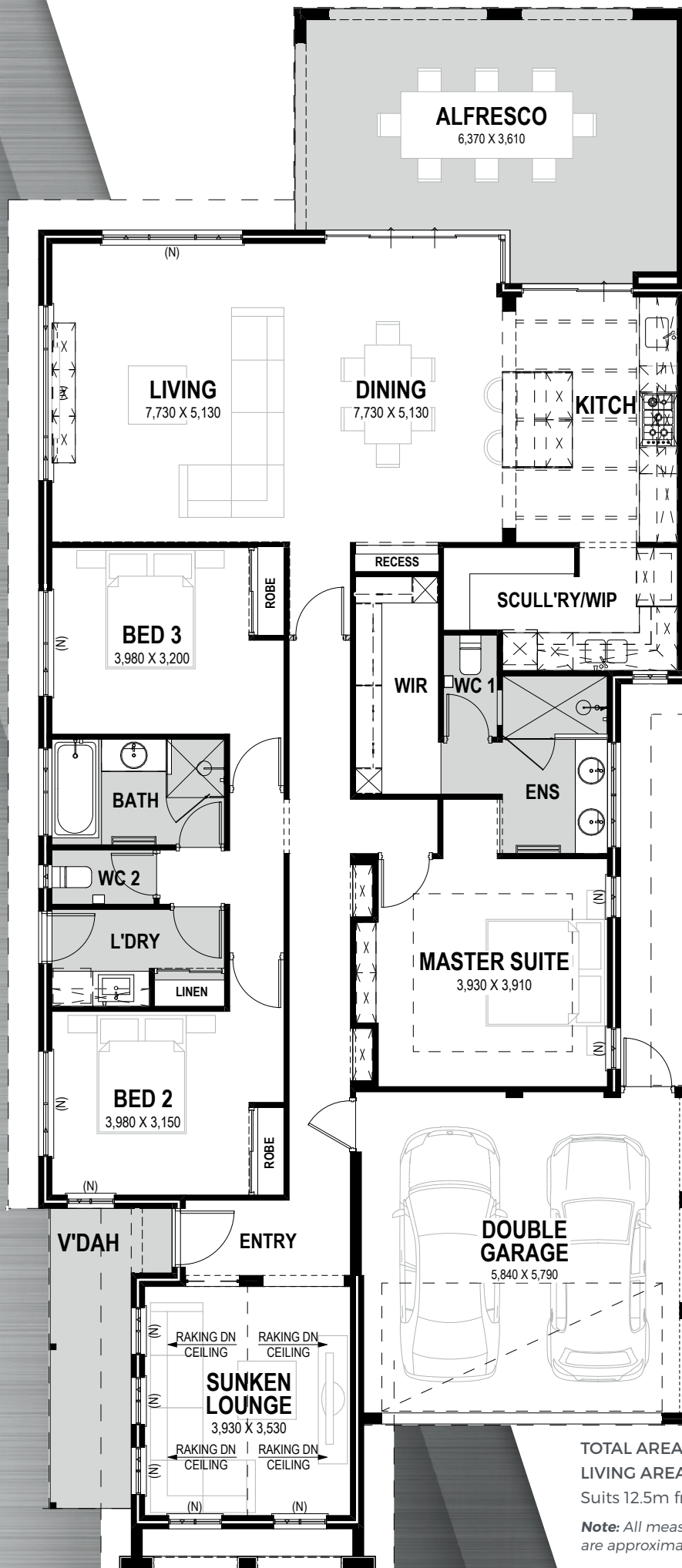
Some of the key features that bring this home to life are travertine tiles and bench tops, wood flooring and timber beams, arched ways being a prominent feature in mediterranean architecture.

Wrought iron accents adding a touch of old world charm to the home, cosy white walls to reflect the sunlight, linen and warm tones throughout.

Large windows and doors with views over lush courtyard inspired gardens.

This design style is rich in timeless beauty making it a popular choice for homes in warm coastal regions.





TOTAL AREA 258.14m²

LIVING AREA 188.98m²

Suits 12.5m frontage

Note: All measurements
are approximate



Progress Watcher™

Follow the progress of your new home from contract signing to finish – from the comfort of your own computer!



Exclusive Interior Design Service

We've partnered with an interior designer to assist you with colour and tile selections for your new home and turn your dream home decor into a reality.



25 Year Structural Guarantee

We build quality homes to the highest standards – and provide you with a 25 year structural warranty to ensure your peace of mind.



More information available on the website

Head to endeavourhomes.com.au to request a copy of the specification and more information relating to this home design.

9263 4450 | endeavourhomes.com.au/display-homes

Endeavour Constructions Pty Ltd

ENDEAVOUR 
HOMES
Builders of Quality