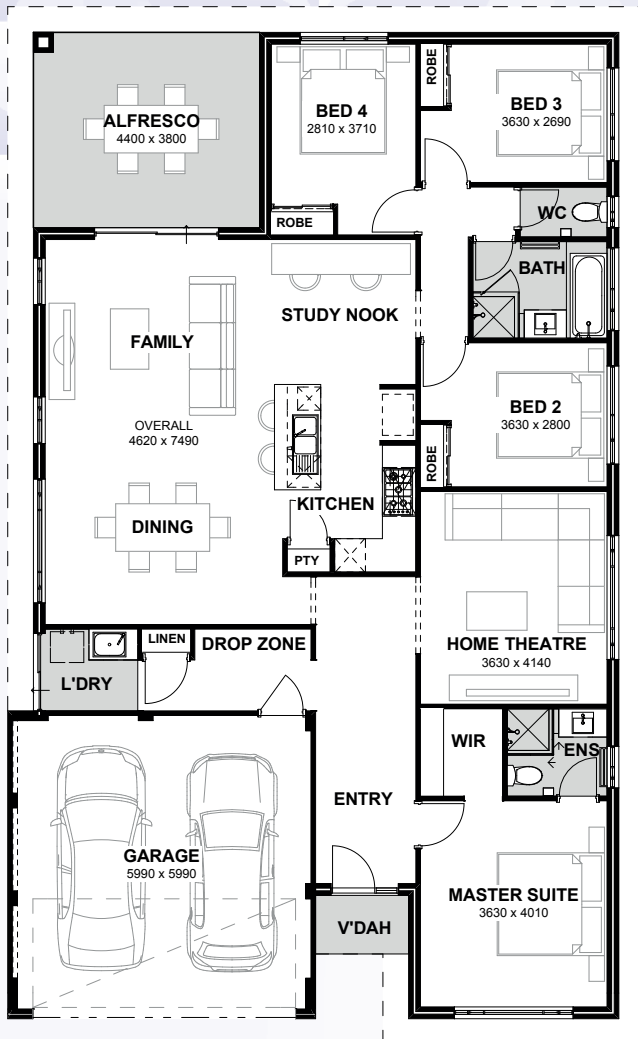


# WAVERLEY



SAPPHIRE  
SERIES

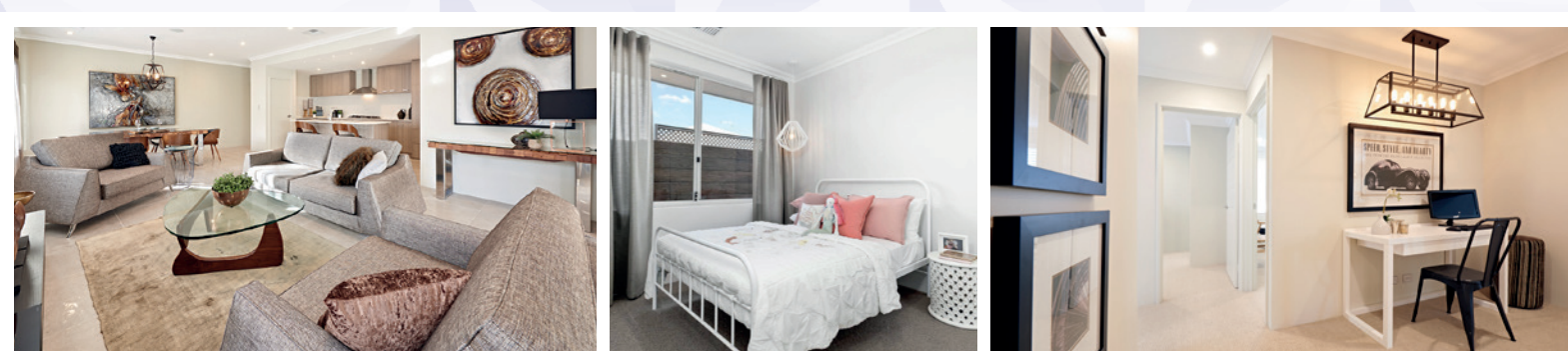


TOTAL AREA 219.28m<sup>2</sup>  
FRONTAGE Suits 14.5m

This home sure packs a punch, with a large theatre, study nook and alfresco, this home is perfect for the busy family. The drop zone is perfect to keep school bags and shoes out of sight!

## INCLUSIONS

- ◆ Ducted reverse cycle air conditioning
- ◆ 30c high ceilings to the home including alfresco
- ◆ Internal brick wall with drywall lining system
- ◆ Silestone benchtops to kitchen, ensuite and bathroom
- ◆ 900mm kitchen appliances
- ◆ Under bench microwave recess including pot drawer
- ◆ Semi framed shower doors and screens
- ◆ Unframed mirrors with domed facings above vanities
- ◆ Inset trough to laundry
- ◆ 26L instantaneous hot water system
- ◆ 4 point NBN pack and 10 LED downlights



9263 4450 | [endeavourhomes.com.au](http://endeavourhomes.com.au)

Images for illustration purposes only

ENDEAVOUR  
HOMES