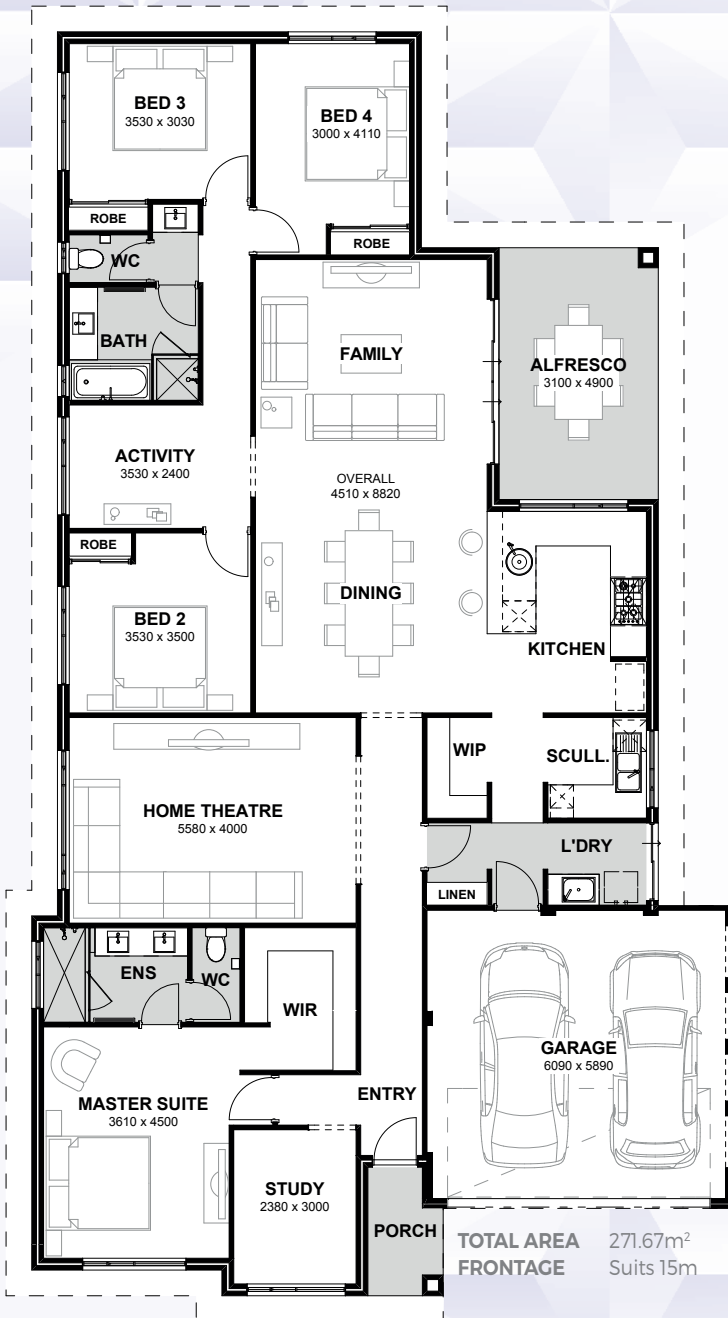


ALKIMOS



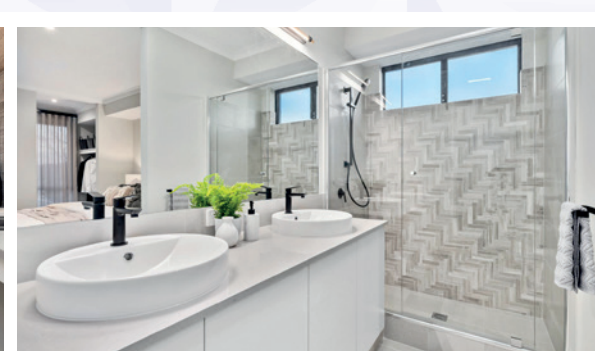
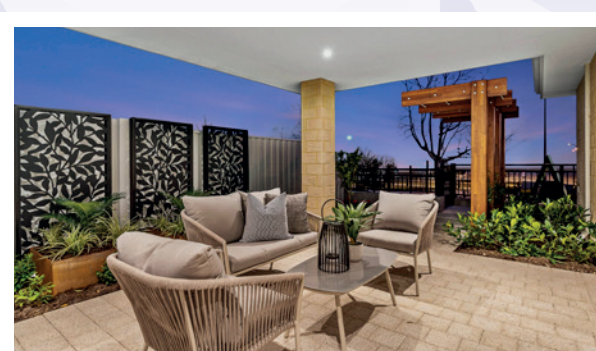
SAPPHIRE
SERIES



The Alkimos has something for every family member it features an open living area at the heart of the home which opens to the large outdoor alfresco area, making it the perfect space for indoor and outdoor entertaining.

INCLUSIONS

- ◆ Ducted reverse cycle air conditioning
- ◆ 30c high ceilings to the home including alfresco
- ◆ Internal brick wall with drywall lining system
- ◆ Silestone benchtops to kitchen, ensuite and bathroom
- ◆ 900mm kitchen appliances
- ◆ Under bench microwave recess including pot drawer
- ◆ Semi framed shower doors and screens
- ◆ Unframed mirrors with domed facings above vanities
- ◆ Inset trough to laundry
- ◆ 26L instantaneous hot water system
- ◆ 4 point NBN pack and 10 LED downlights



9263 4450 | endeavourhomes.com.au

Images for illustration purposes only

ENDEAVOUR
HOMES