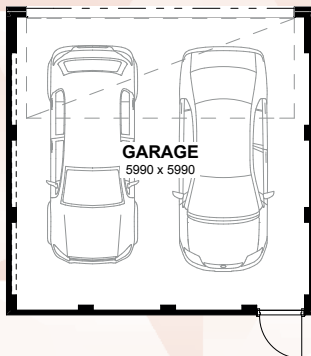
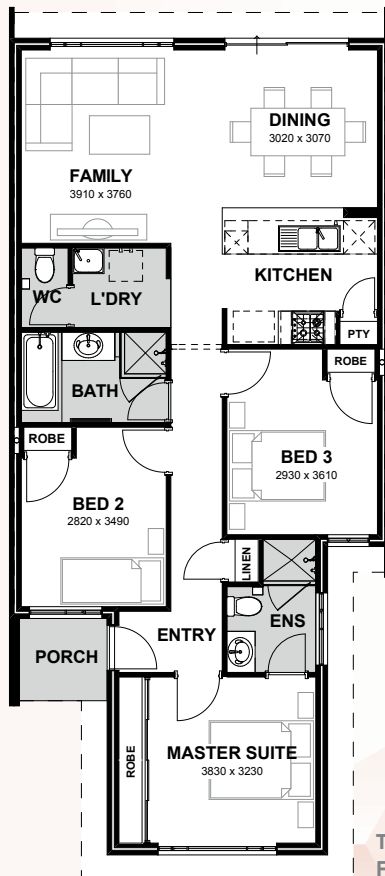


# SAN JUAN



The San Juan continues the design trend for smaller lots and compact living. This three bedroom home utilises both boundaries ensuring optimal use of the block.



TOTAL AREA 140.41m<sup>2</sup>  
FRONTAGE Suits 7.5m

## INCLUSIONS

- ◆ Floor tiles to main living areas
- ◆ Carpets to remaining rooms
- ◆ Venetian or Vertical Blinds
- ◆ 28c ceilings throughout home
- ◆ Internal brick wall with drywall lining system
- ◆ 600mm stainless steel appliances to kitchen including canopy rangehood
- ◆ Soft closing drawers and doors to kitchen and bathrooms
- ◆ Glass shower screen doors
- ◆ 6 star energy efficient heat pump hot water unit
- ◆ NBN 4 point pack - (2 x TV points, 1 x data point and 1 x phone point)

