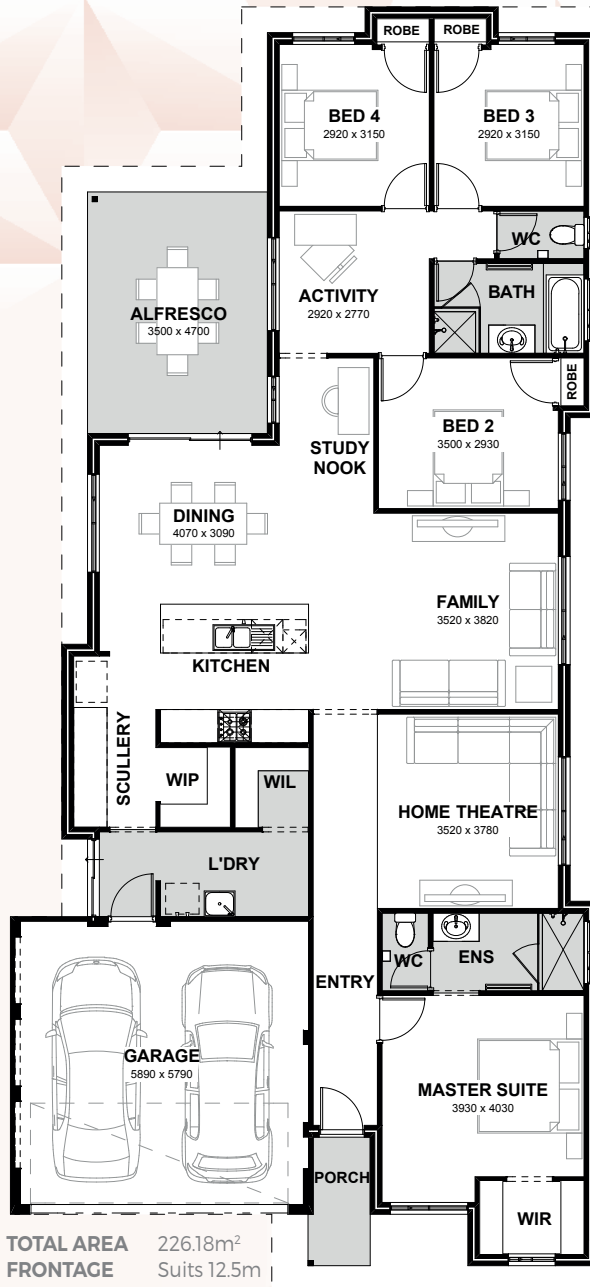


# MOSSVALE



Inspired by and based upon our award winning display home, the Ruby Series Mossvale features four bedrooms and two bathrooms complete with a scullery and open plan living space, this home is perfect for entertainers.

## INCLUSIONS

- ◆ Floor tiles to main living areas
- ◆ Carpets to remaining rooms
- ◆ Venetian or Vertical Blinds
- ◆ 28c ceilings throughout home
- ◆ Internal brick wall with drywall lining system
- ◆ 600mm stainless steel appliances to kitchen including canopy rangehood
- ◆ Soft closing drawers and doors to kitchen and bathrooms
- ◆ Glass shower screen doors
- ◆ 6 star energy efficient heat pump hot water unit
- ◆ NBN 4 point pack - (2 x TV points, 1 x data point and 1 x phone point)

