

# ROBERTO



3



2

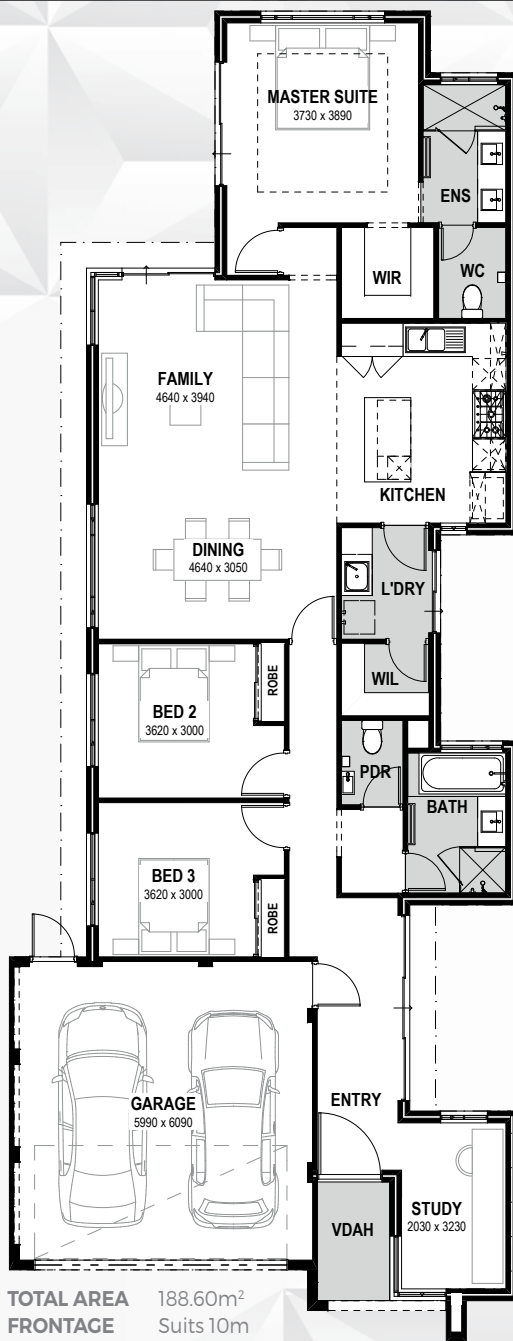


2



10

DIAMOND  
SERIES



**A balance of style, comfort and functionality.**  
The Roberto boasts three bedrooms, and two bathrooms suited to a narrow lot.

## INCLUSIONS

- ◆ Ducted reverse cycle air conditioning
- ◆ 31c high ceilings to living and alfresco
- ◆ Internal brick wall with drywall lining system
- ◆ Feature recess ceiling to home theatre or master bedroom
- ◆ 1200mm wide front entry door if applicable
- ◆ Silestone benchtops throughout
- ◆ 900mm Bosch or Ilve kitchen appliances
- ◆ Overhead cupboards to kitchen
- ◆ Semi framed shower doors and screen with hobless shower
- ◆ Polished edge slimline frame mirror over vanities
- ◆ Inset trough to laundry
- ◆ NBN structured cabling package and 10 LED downlights



9263 4450 | [endeavourhomes.com.au](http://endeavourhomes.com.au)

*Images for illustration purposes only*

**ENDEAVOUR**  
HOMES