

DONATELLA



4



3

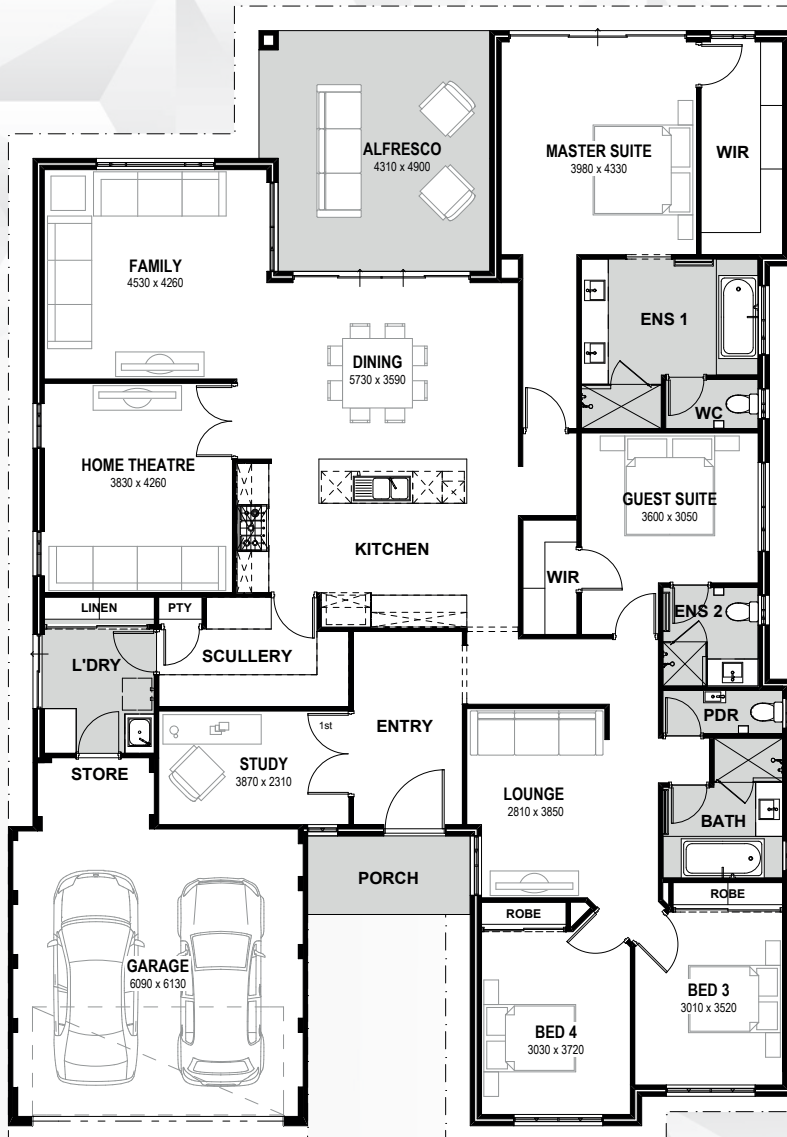


2



18

DIAMOND
SERIES



TOTAL AREA 316.06m²
FRONTAGE Suits 18m

This grand design has everything you could possibly dream of under the one roof, featuring four bedrooms, three bathrooms and an abundance of living areas.

INCLUSIONS

- ◆ Ducted reverse cycle air conditioning
- ◆ 31c high ceilings to living and alfresco
- ◆ Internal brick wall with drywall lining system
- ◆ Feature recess ceiling to home theatre or master bedroom
- ◆ 1200mm wide front entry door if applicable
- ◆ Silestone benchtops throughout
- ◆ 900mm Bosch or Ilve kitchen appliances
- ◆ Overhead cupboards to kitchen
- ◆ Semi framed shower doors and screen with hobless shower
- ◆ Polished edge slimline frame mirror over vanities
- ◆ Inset trough to laundry
- ◆ NBN structured cabling package and 10 LED downlights



9263 4450 | endeavourhomes.com.au

Images for illustration purposes only

ENDEAVOUR
HOMES