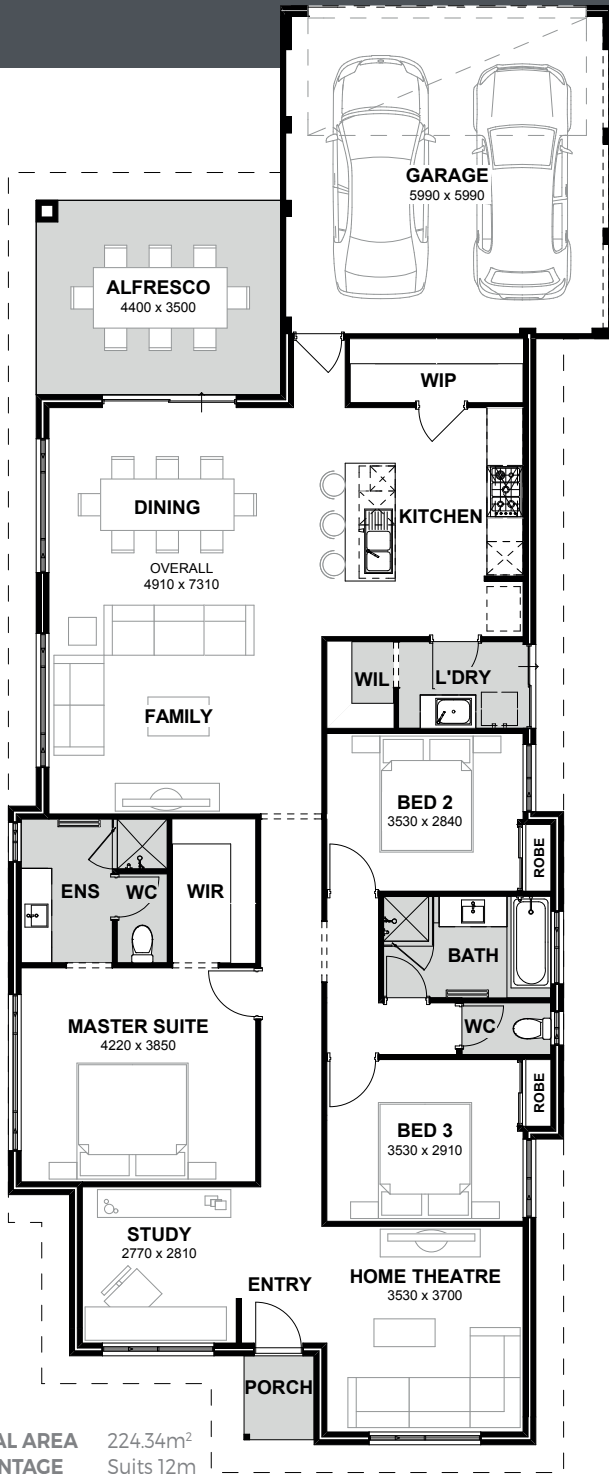
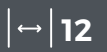


THE DAYLESFORD



The Daylesford epitomises intelligent design with its meticulously planned layout, offering a sophisticated living experience in a three-bedroom, two-bathroom rear-loaded home. This thoughtfully crafted residence seamlessly blends functionality with style, catering to the modern homeowner's desire for both comfort and practicality.

Upon entering The Daylesford, residents are greeted by a harmonious fusion of form and function, where every detail has been carefully considered to enhance the overall living experience. The inclusion of a dedicated theatre room provides a space for entertainment and relaxation, while a study area offers a quiet retreat for work or contemplation. The seamless flow between living spaces creates an inviting atmosphere, perfect for both intimate gatherings and everyday living.

Furthermore, The Daylesford boasts a timeless aesthetic and quality craftsmanship, evident in its refined finishes and architectural elements. The residence is designed to maximise natural light and ventilation, creating a sense of openness and connectivity with the outdoors. Whether unwinding in the comfort of the master suite or enjoying a movie night in the theatre room, residents can appreciate the attention to detail and thoughtful design elements that make The Daylesford a truly exceptional home.



Progress Watcher™



Exclusive Interior Design Service



25 Year Structural Guarantee



More information on the website



9263 4450 | endeavourhomes.com.au

Images for illustration purposes only

ENDEAVOUR HOMES
Builders of Quality