

# THE CANTERBURY



This exquisite four-bedroom, two-bathroom home epitomises sophistication and charm, boasting a plethora of features that elevate its appeal and functionality. From the ornate decorative entry door that welcomes residents and guests with elegance to the generously proportioned master suite flooded with natural light, every detail of this residence exudes a sense of luxury and comfort.

The residence further impresses with its expansive corner verandah, adorned with intricate decorative fretwork and mouldings that add a touch of architectural flair to the exterior. This outdoor space not only enhances the visual appeal of the home but also provides a serene setting for relaxation and outdoor gatherings, seamlessly blending style and functionality.

In addition to its aesthetic allure, this home is designed to offer a seamless living experience, with each room thoughtfully crafted to cater to the needs and preferences of modern families. The well-appointed bedrooms provide ample space for rest and rejuvenation, while the bathrooms feature contemporary fixtures and finishes for a touch of refinement.



Progress Watcher™



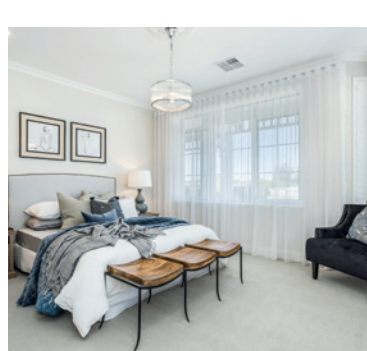
Exclusive Interior Design Service



25 Year Structural Guarantee



More information on the website



9263 4450 | [endeavourhomes.com.au](http://endeavourhomes.com.au)

Images for illustration purposes only

**ENDEAVOUR** HOMES  
*Builders of Quality*