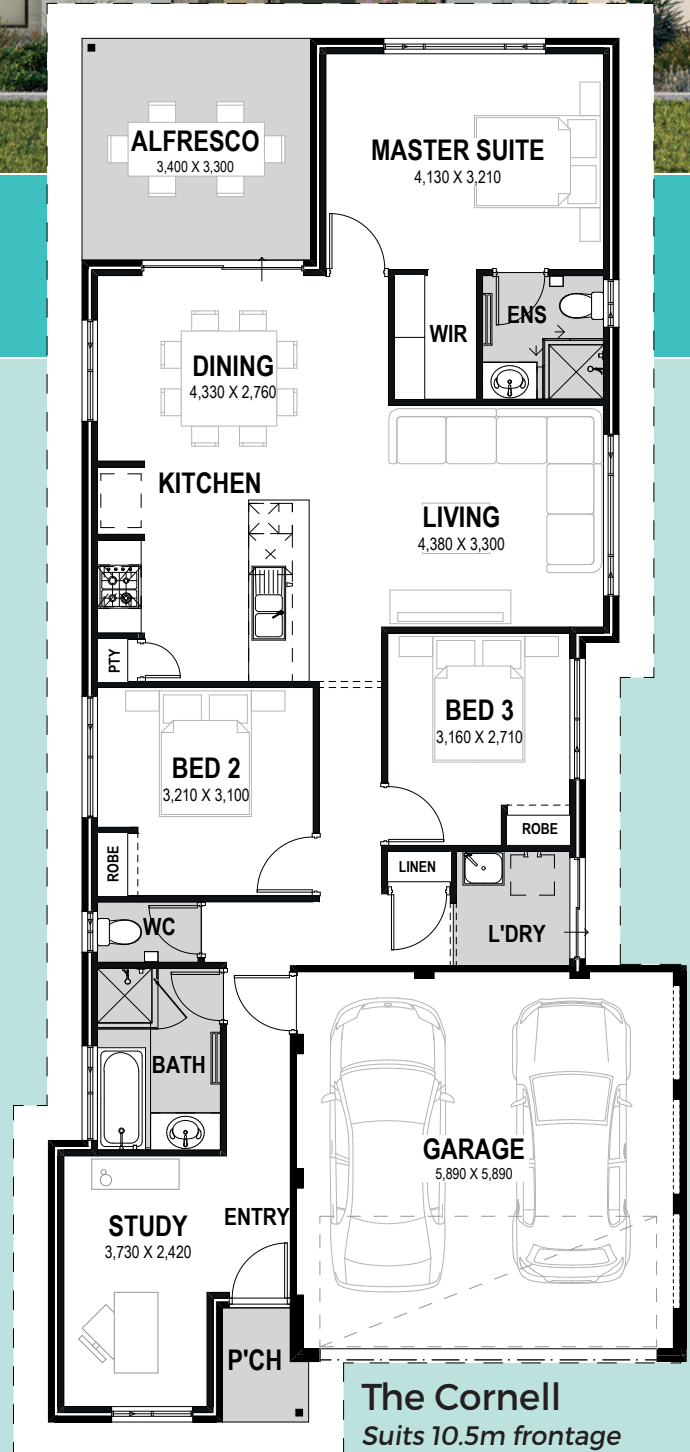


**SITE WORKS
INCLUDED
IN THE PRICE**

**Picture for illustrative purposes only*

FOUNDATION SERIES HOMES INCLUDE:

- ✓ **Site Works*** Includes Soakwells and Crossover
- ✓ **Painting Including Internal Walls**
- ✓ **Ducted Reverse Cycle Air Conditioning**
- ✓ **Large Format Tiles to Living Areas**
- ✓ **Carpets with Underlay to all Bedrooms**
- ✓ **Window Treatments**
- ✓ **20mm Benchtops to the Kitchen** (100% Silica Free)



The Cornell
Suits 10.5m frontage

**Conditions apply*