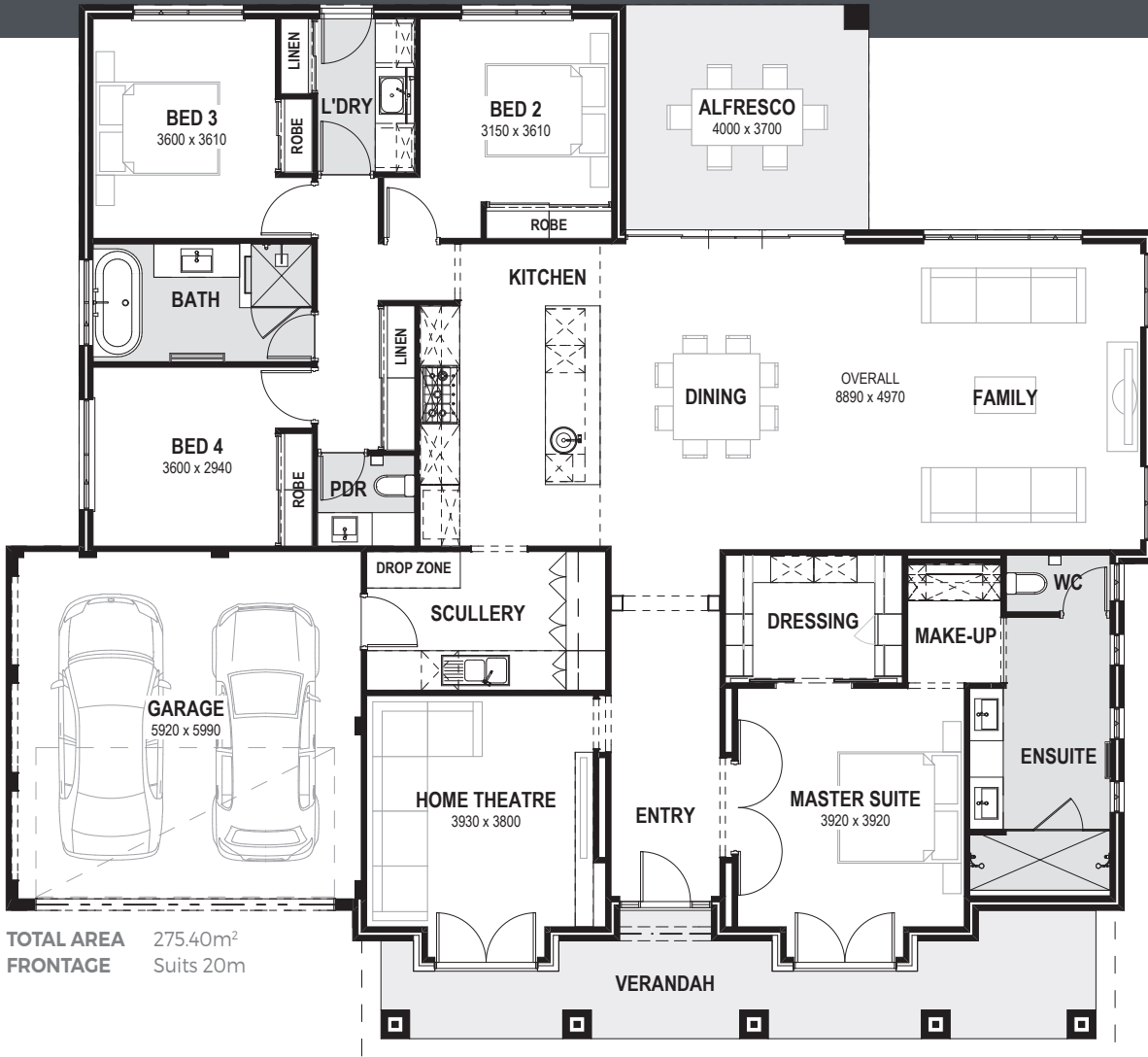


THE BRIDGEHAMPTON



Progress Watcher™



25 Year Structural Guarantee



Exclusive Interior Design Service



More information on the website

Stepping into the Bridgehampton is like stepping into luxury living at its finest. Enter through the double doors of the master suite and you'll quickly realise this home ticks all the boxes on your wish list, and some you never knew you had. A large walk-in robe with dressing room area that can be closed off, a make-up station, ensuite with twin basins and twin shower, and access to the outside verandah, it is truly luxurious.

The large open living area is an entertainer's delight with large kitchen, a scullery and alfresco area. The natural light and views to the outdoors really help to combine these zones. The Bridgehampton is stunning both inside and outside, and with three minor bedrooms, a powder room, ample storage for the growing family, and a home theatre with French doors that open out to the verandah, this home has the whole family in mind.



9263 4450 | endeavourhomes.com.au

Images for illustration purposes only

ENDEAVOUR 
 HOMES
 Builders of Quality