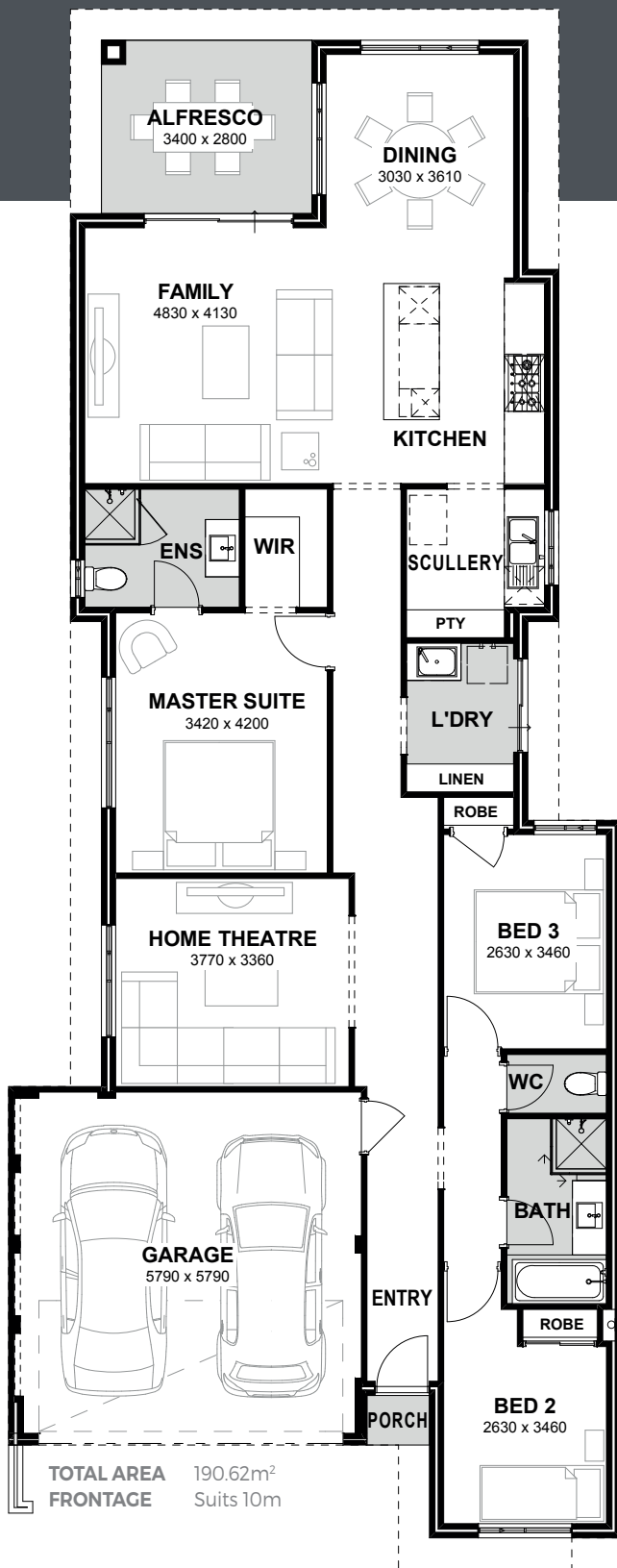
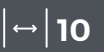


THE BATHURST



The Bathurst epitomises modern living with its meticulously planned three-bedroom, two-bathroom home design, incorporating sought-after features such as a home theatre and a well-appointed scullery adjacent to the kitchen. This thoughtfully curated residence seamlessly blends functionality with style, catering to the needs and preferences of discerning homeowners seeking a harmonious living environment.

In addition to its practical layout and contemporary design elements, The Bathurst boasts an open living area that serves as the heart of the home, flooded with natural light to create a bright and inviting ambiance. This spacious and well-lit living space not only enhances the overall aesthetic appeal of the residence but also promotes a sense of openness and connectivity, ideal for both relaxation and entertaining guests.

The Bathurst's design extends beyond its interior features, emphasising a seamless integration of indoor and outdoor living spaces. The residence offers a seamless transition from the open living area to an outdoor alfresco space, providing residents with a versatile setting for enjoying the beauty of the surrounding landscape and embracing a true indoor-outdoor lifestyle. Whether unwinding in the comfort of the home theatre, preparing meals in the well-equipped kitchen with a convenient scullery, or basking in the natural light of the open living area,



Progress Watcher™



Exclusive Interior Design Service



25 Year Structural Guarantee



More information on the website



9263 4450 | endeavourhomes.com.au

Images for illustration purposes only

ENDEAVOUR HOMES
Builders of Quality