

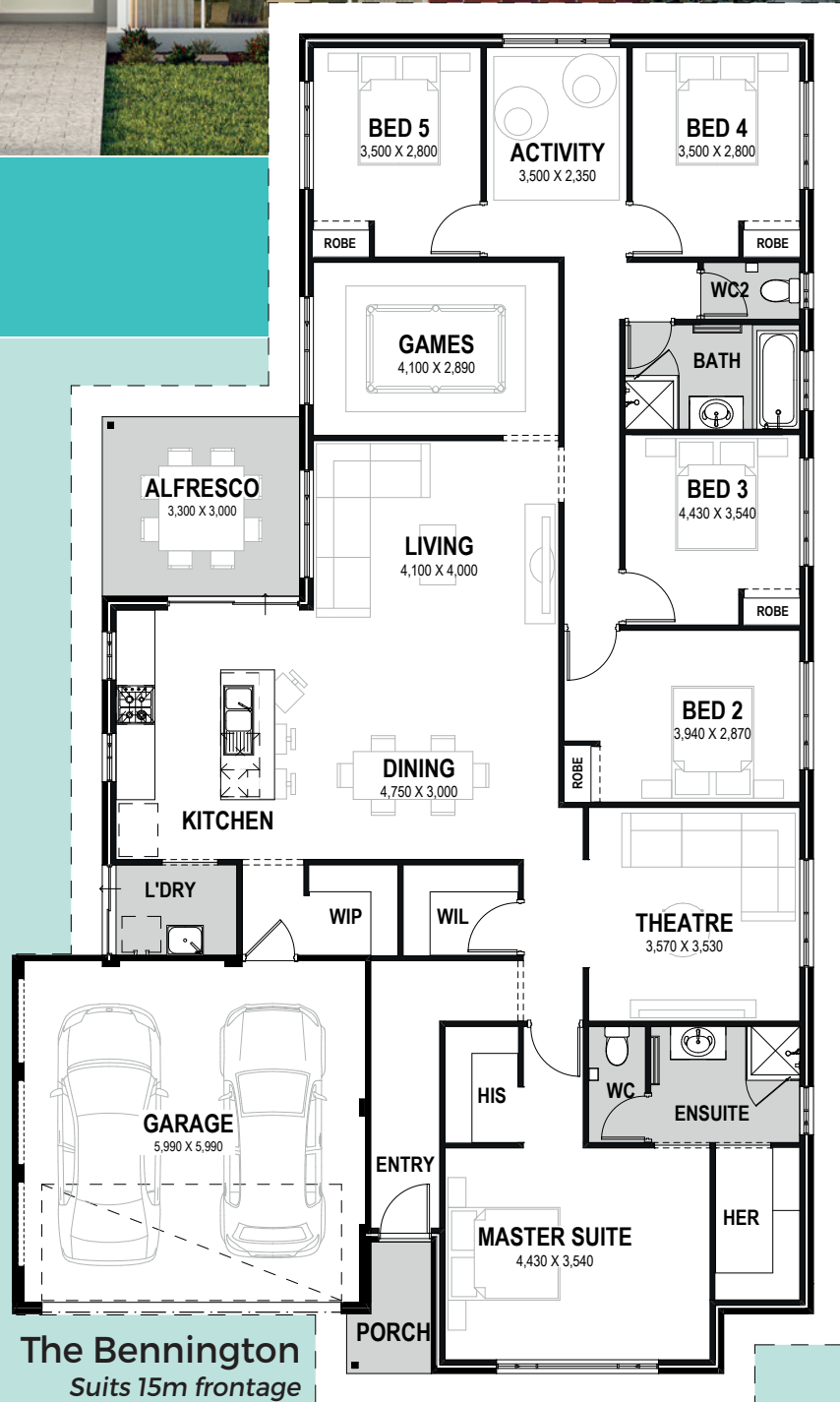


**SITE WORKS
INCLUDED
IN THE PRICE**

**Picture for illustrative purposes only*

FOUNDATION SERIES HOMES INCLUDE:

- ✓ Site Works* Includes Soakwells and Crossover
- ✓ Painting Including Internal Walls
- ✓ Ducted Reverse Cycle Air Conditioning
- ✓ Large Format Tiles to Living Areas
- ✓ Carpets with Underlay to all Bedrooms
- ✓ Window Treatments
- ✓ 20mm Benchtops to the Kitchen (100% Silica Free)



The Bennington
Suits 15m frontage

**Conditions apply*