

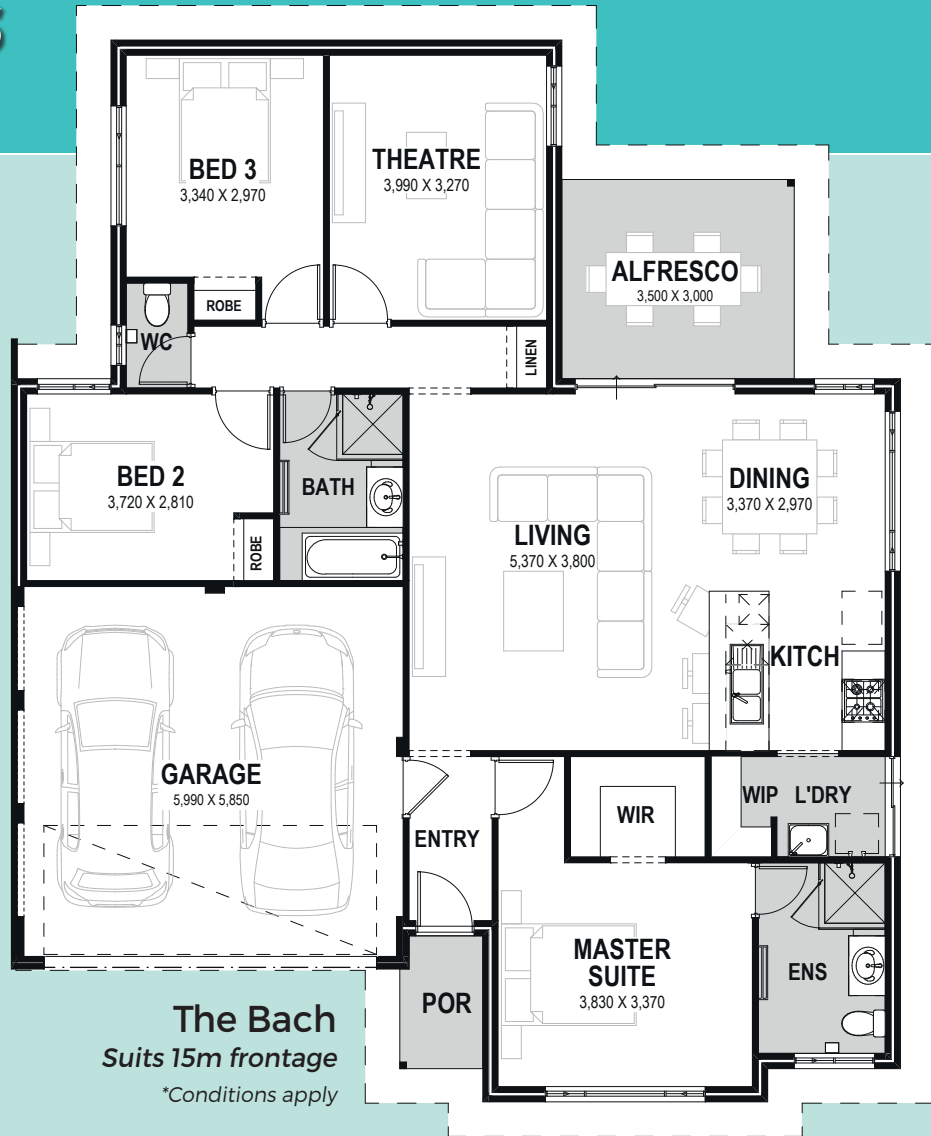


**SITE WORKS  
INCLUDED  
IN THE PRICE**

\*Picture for illustrative purposes only

## FOUNDATION SERIES HOMES INCLUDE:

- ✓ Site Works\* Includes Soakwells and Crossover
- ✓ Painting Including Internal Walls
- ✓ Ducted Reverse Cycle Air Conditioning
- ✓ Large Format Tiles to Living Areas
- ✓ Carpets with Underlay to all Bedrooms
- ✓ Window Treatments
- ✓ 20mm Benchtops to the Kitchen (100% Silica Free)



**The Bach**  
Suits 15m frontage  
\*Conditions apply